



STATION

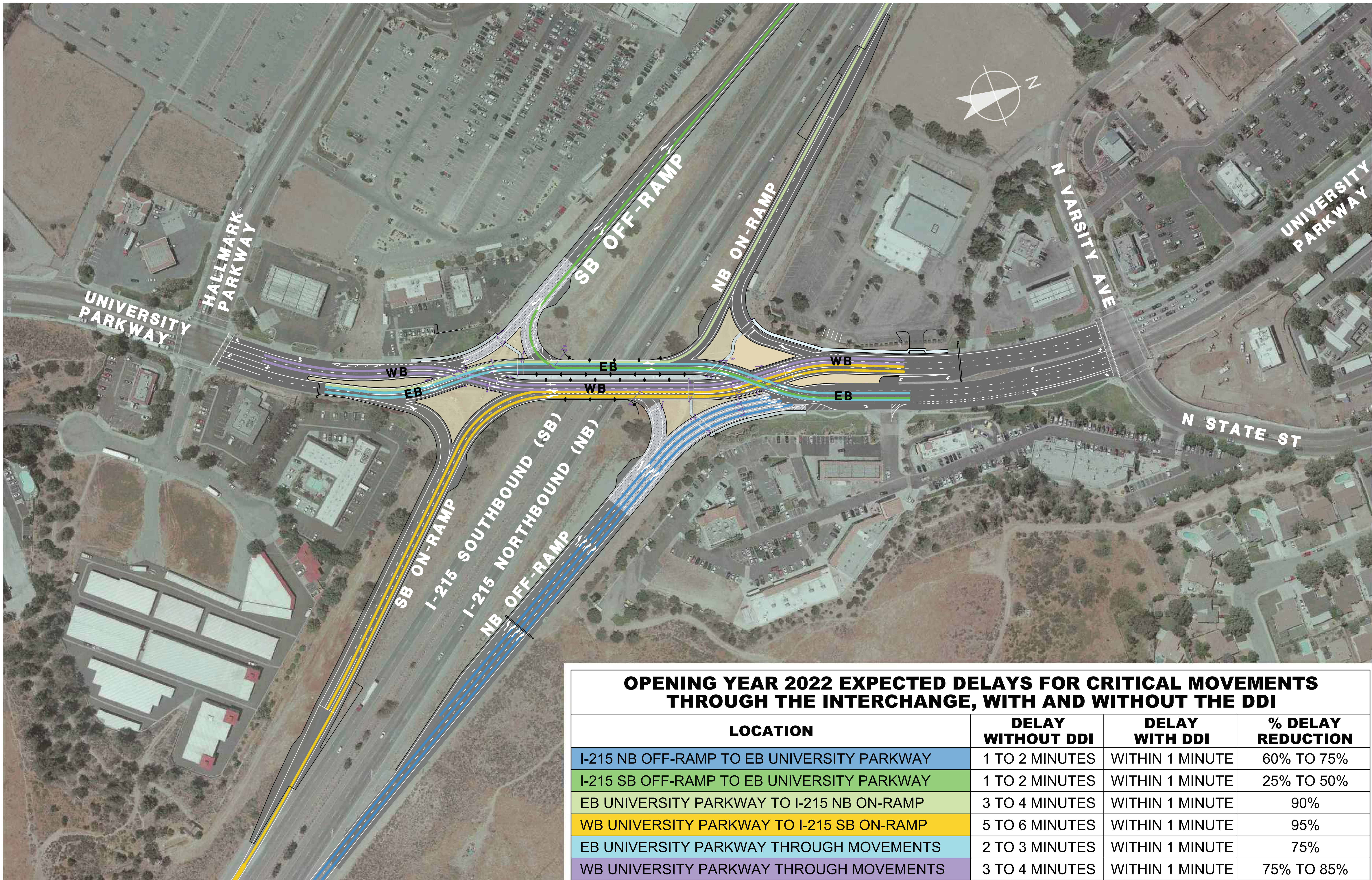
1

Welcome/Bienvenidos

I-215/UNIVERSITY PARKWAY INTERCHANGE IMPROVEMENT PROJECT

**Initial Study with Proposed Negative Declaration
Public Hearing (Open House Format) - July 25, 2019**

PLAN. BUILD. MOVE.



OPENING YEAR 2022 EXPECTED DELAYS FOR CRITICAL MOVEMENTS THROUGH THE INTERCHANGE, WITH AND WITHOUT THE DDI

LOCATION	DELAY WITHOUT DDI	DELAY WITH DDI	% DELAY REDUCTION
I-215 NB OFF-RAMP TO EB UNIVERSITY PARKWAY	1 TO 2 MINUTES	WITHIN 1 MINUTE	60% TO 75%
I-215 SB OFF-RAMP TO EB UNIVERSITY PARKWAY	1 TO 2 MINUTES	WITHIN 1 MINUTE	25% TO 50%
EB UNIVERSITY PARKWAY TO I-215 NB ON-RAMP	3 TO 4 MINUTES	WITHIN 1 MINUTE	90%
WB UNIVERSITY PARKWAY TO I-215 SB ON-RAMP	5 TO 6 MINUTES	WITHIN 1 MINUTE	95%
EB UNIVERSITY PARKWAY THROUGH MOVEMENTS	2 TO 3 MINUTES	WITHIN 1 MINUTE	75%
WB UNIVERSITY PARKWAY THROUGH MOVEMENTS	3 TO 4 MINUTES	WITHIN 1 MINUTE	75% TO 85%

Please submit comments by August 12, 2019 using the following options:

- Complete/return public comment card in the comment box at tonight's public hearing
- Send email to: D8.0E420.Comments@dot.ca.gov
- Please post mail comments to:
 - Antonia Toledo, Senior Environmental Planner
California Department of Transportation, District 8
Environmental Studies D
464 West 4th Street, 6th Floor, MS 820
San Bernardino, CA 92401–1400
- Leave a comment with the court reporter at tonight's public hearing

