

# Ontario International Airport Connector Project



## APPENDIX S: PROJECT FOOTPRINT MAP

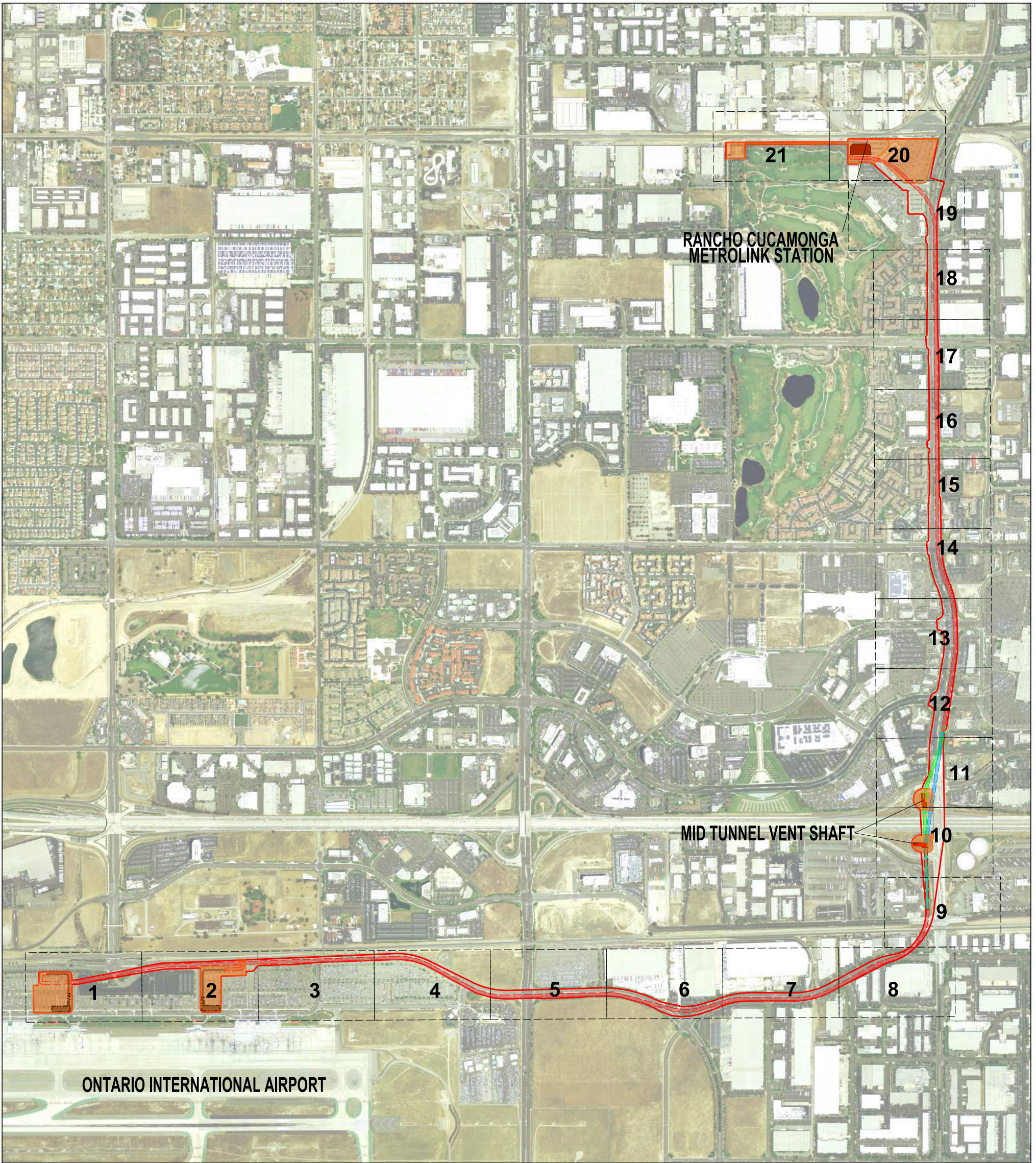
October 2024



Prepared for:

San Bernardino County Transportation Authority  
1170 West Third Street, Second Floor  
San Bernardino, California 92410-1715

THIS PAGE INTENTIONALLY BLANK



# PROJECT FOOTPRINT

ONTARIO AIRPORT LOOP  
CITIES OF RANCHO CUCAMONGA AND ONTARIO

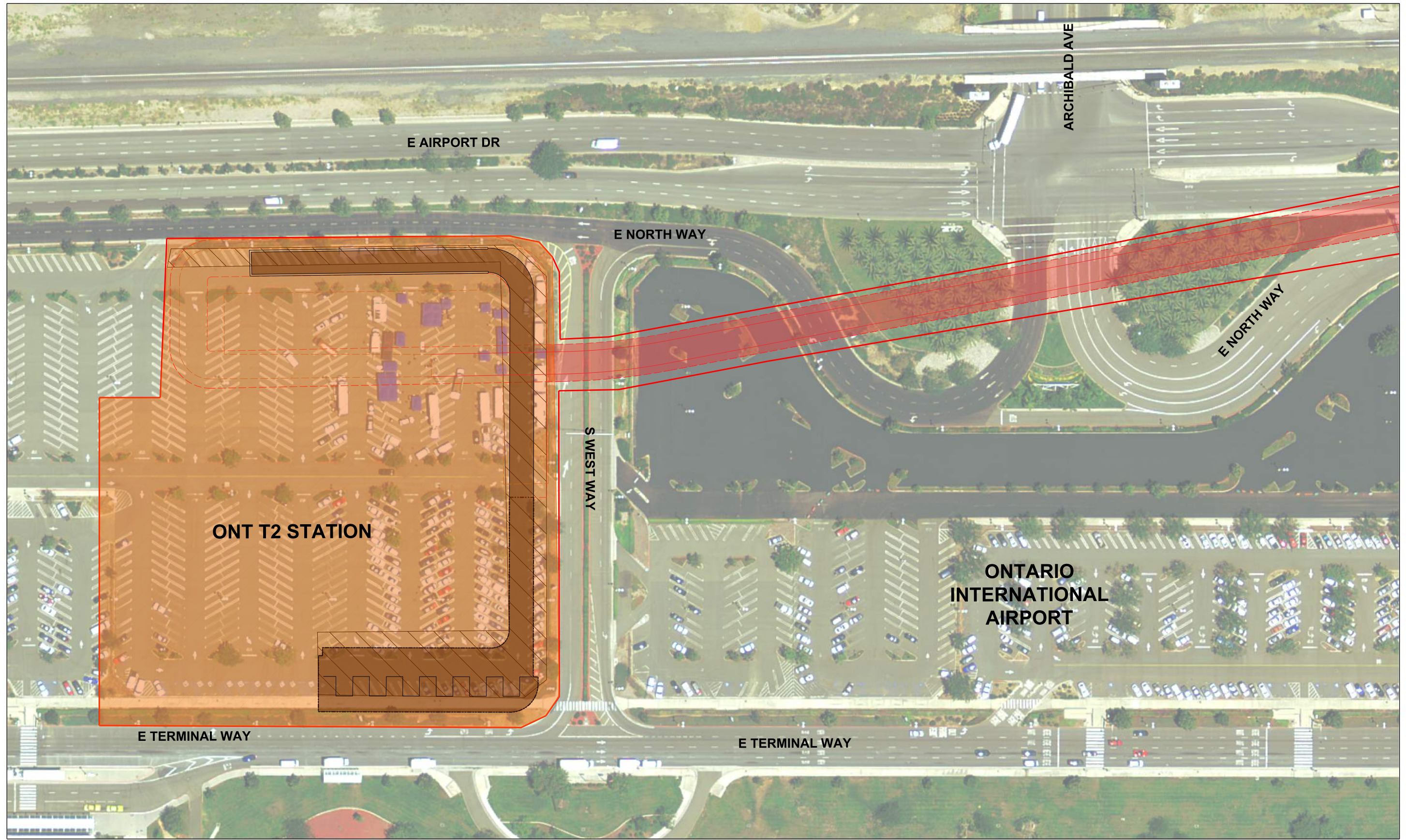




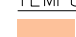



0.25 0 0.25 0.50



SCALE: 1"=0.25 MILES

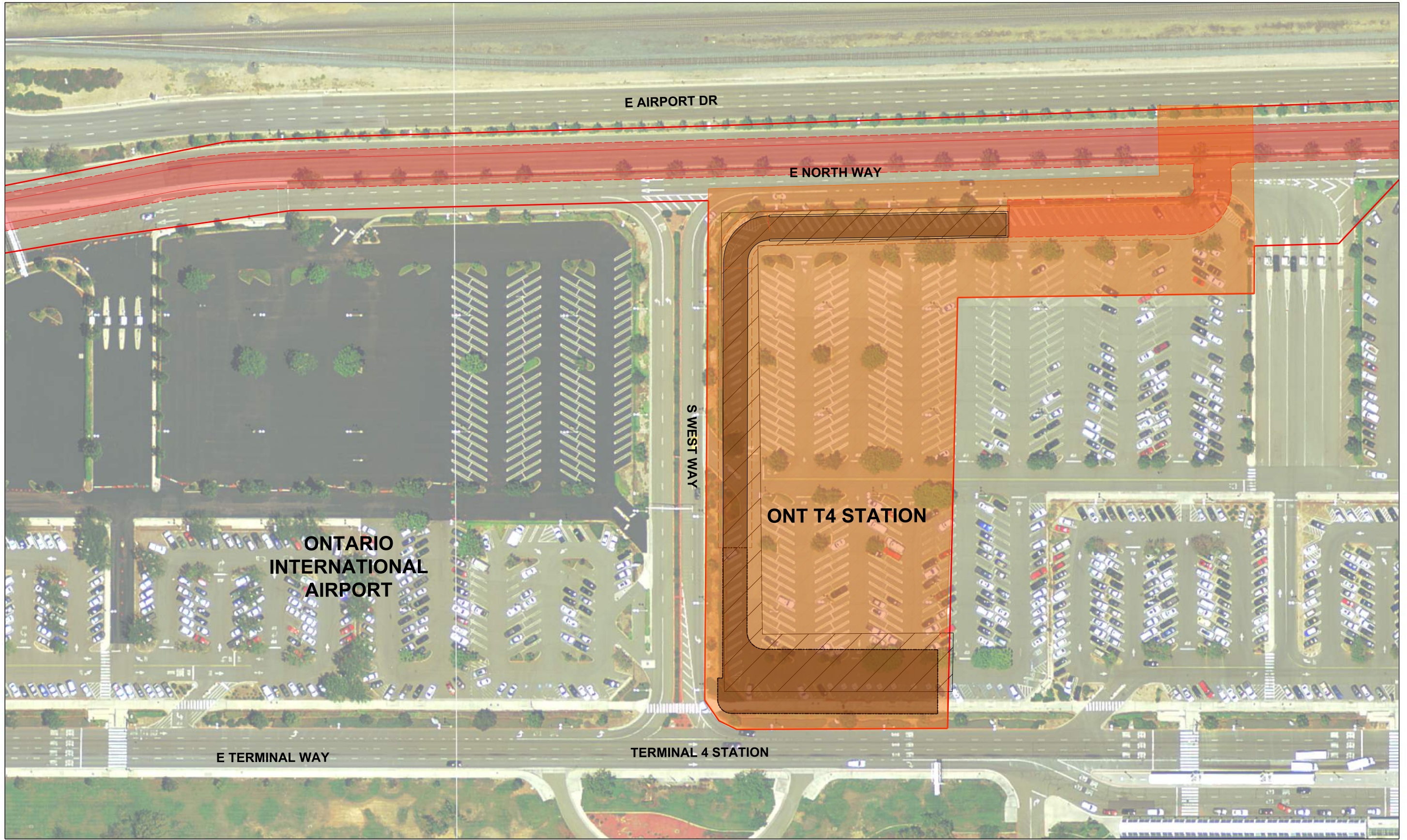
- PROJECT FOOTPRINT
- VENT SHAFT DESIGN OPTION 2
- VENT SHAFT DESIGN OPTION 4









- |   |   |
|---|---|
|  PROJECT FOOTPRINT                                   | <b>PERMANENT IMPACTS</b>  |
| <b>TEMPORARY IMPACTS</b>  |  TUNNEL BASE (UNDERGROUND)       |
|  TEMPORARY EASEMENT/<br>CONSTRUCTION STAGING<br>AREA |  CUT AND COVER (ABOVEGROUND)     |
|   |  STATION FOOTPRINT (ABOVEGROUND) |
|   |  PARKING IMPACT (ABOVEGROUND)    |

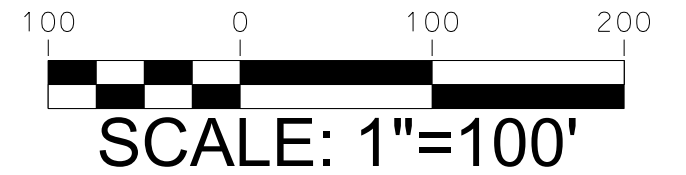
PROJECT MAP FEATURES  
 MAP 1 OF 21  
 ONTARIO AIRPORT LOOP  
 CITIES OF RANCHO  
 CUCAMONGA AND ONTARIO





- |   |   |
|---|---|
|  PROJECT FOOTPRINT                                   | <b>PERMANENT IMPACTS</b>  |
| <b>TEMPORARY IMPACTS</b>  |  TUNNEL BASE (UNDERGROUND)       |
|  TEMPORARY EASEMENT/<br>CONSTRUCTION STAGING<br>AREA |  CUT AND COVER (ABOVEGROUND)     |
|   |  STATION FOOTPRINT (ABOVEGROUND) |
|   |  PARKING IMPACT (ABOVEGROUND)    |

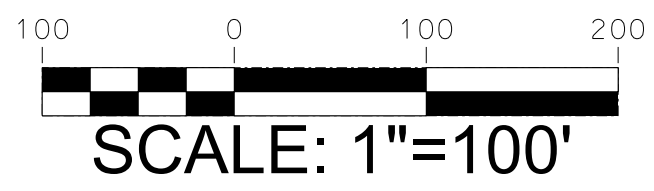
PROJECT MAP FEATURES  
 MAP 2 OF 21  
 ONTARIO AIRPORT LOOP  
 CITIES OF RANCHO  
 CUCAMONGA AND ONTARIO

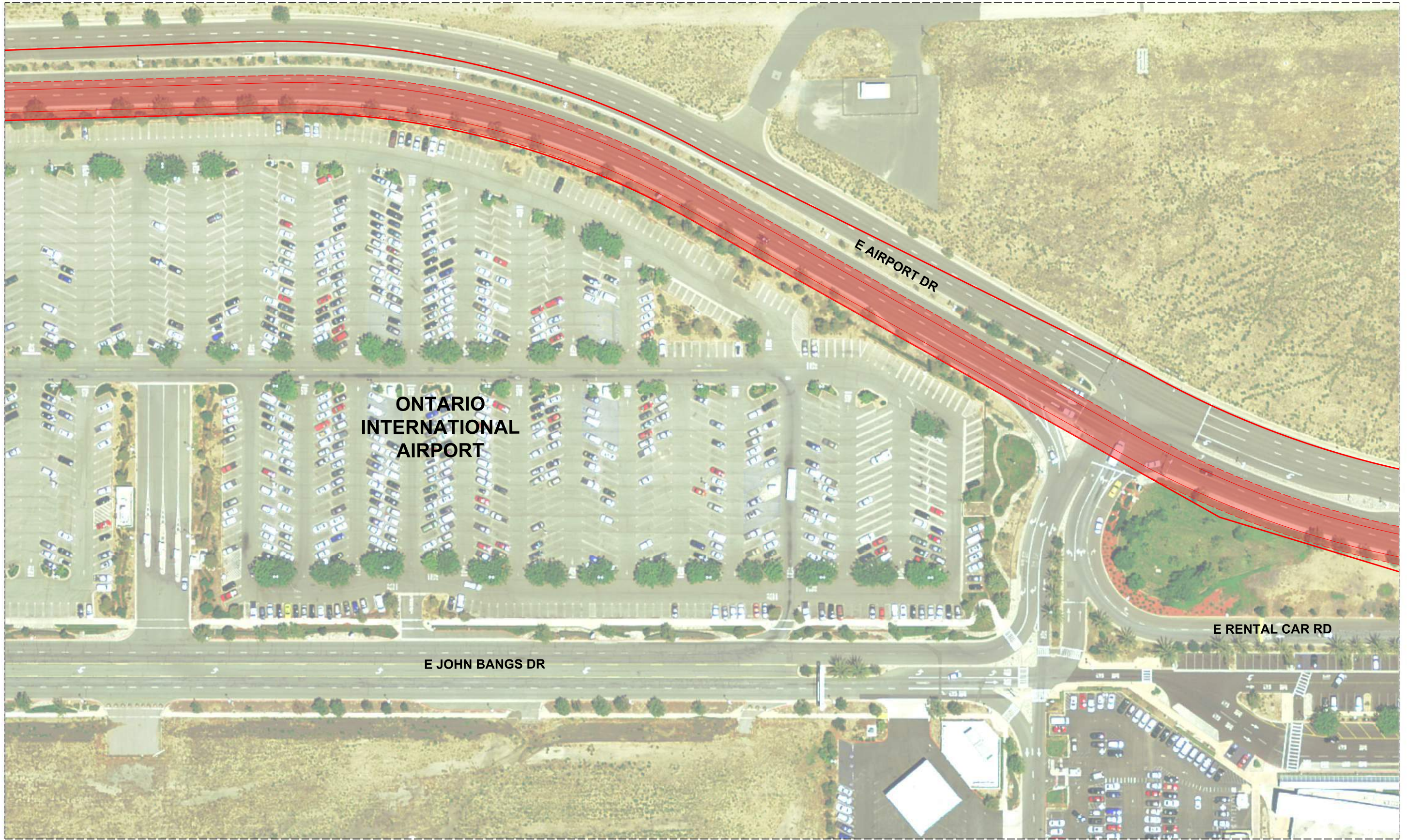




- PROJECT FOOTPRINT
- PERMANENT IMPACTS
- TUNNEL BASE (UNDERGROUND)

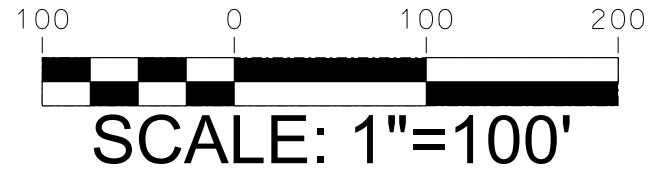
PROJECT MAP FEATURES  
 MAP 3 OF 21  
 ONTARIO AIRPORT LOOP  
 CITIES OF RANCHO  
 CUCAMONGA AND ONTARIO

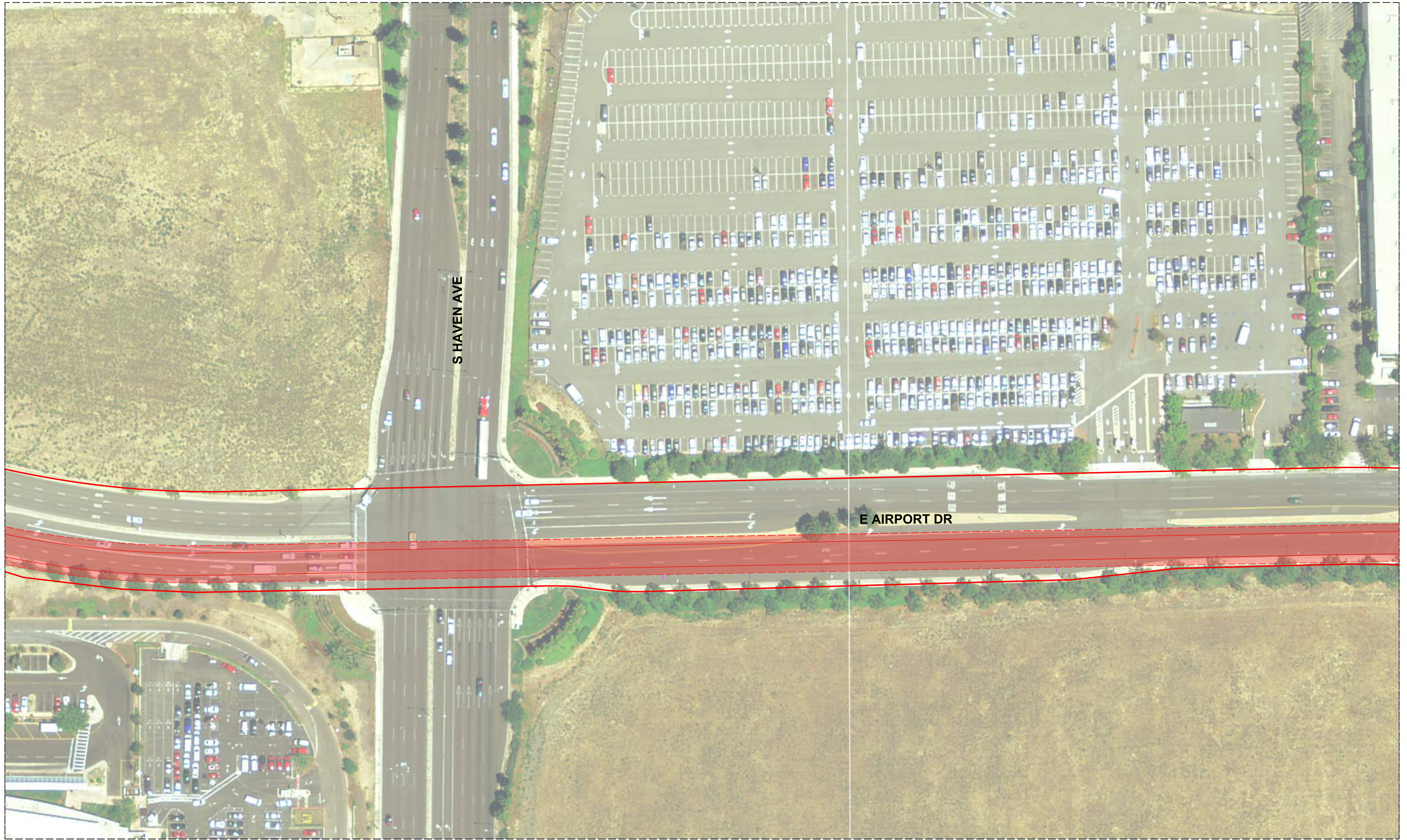






- PROJECT FOOTPRINT
- PERMANENT IMPACTS
- TUNNEL BASE (UNDERGROUND)

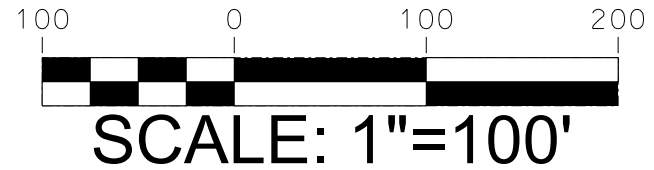
PROJECT MAP FEATURES  
 MAP 4 OF 21  
 ONTARIO AIRPORT LOOP  
 CITIES OF RANCHO  
 CUCAMONGA AND ONTARIO







-  PROJECT FOOTPRINT
- PERMANENT IMPACTS
  -  TUNNEL BASE (UNDERGROUND)

PROJECT MAP FEATURES  
MAP 5 OF 21  
ONTARIO AIRPORT LOOP  
CITIES OF RANCHO  
CUCAMONGA AND ONTARIO

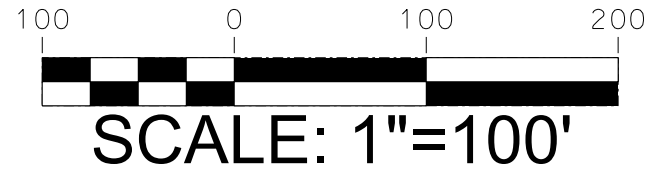








-  PROJECT FOOTPRINT
- PERMANENT IMPACTS
  -  TUNNEL BASE (UNDERGROUND)

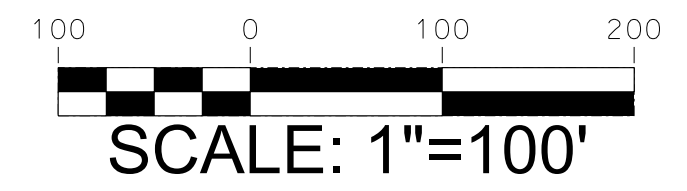
PROJECT MAP FEATURES  
MAP 6 OF 21  
ONTARIO AIRPORT LOOP  
CITIES OF RANCHO  
CUCAMONGA AND ONTARIO





-  PROJECT FOOTPRINT
- PERMANENT IMPACTS
  -  TUNNEL BASE (UNDERGROUND)

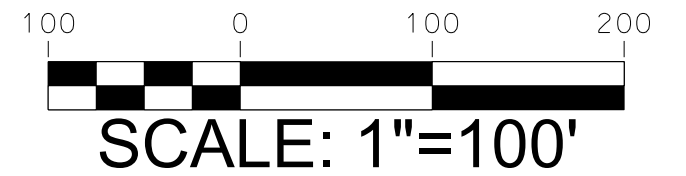
PROJECT MAP FEATURES  
MAP 7 OF 21  
ONTARIO AIRPORT LOOP  
CITIES OF RANCHO  
CUCAMONGA AND ONTARIO

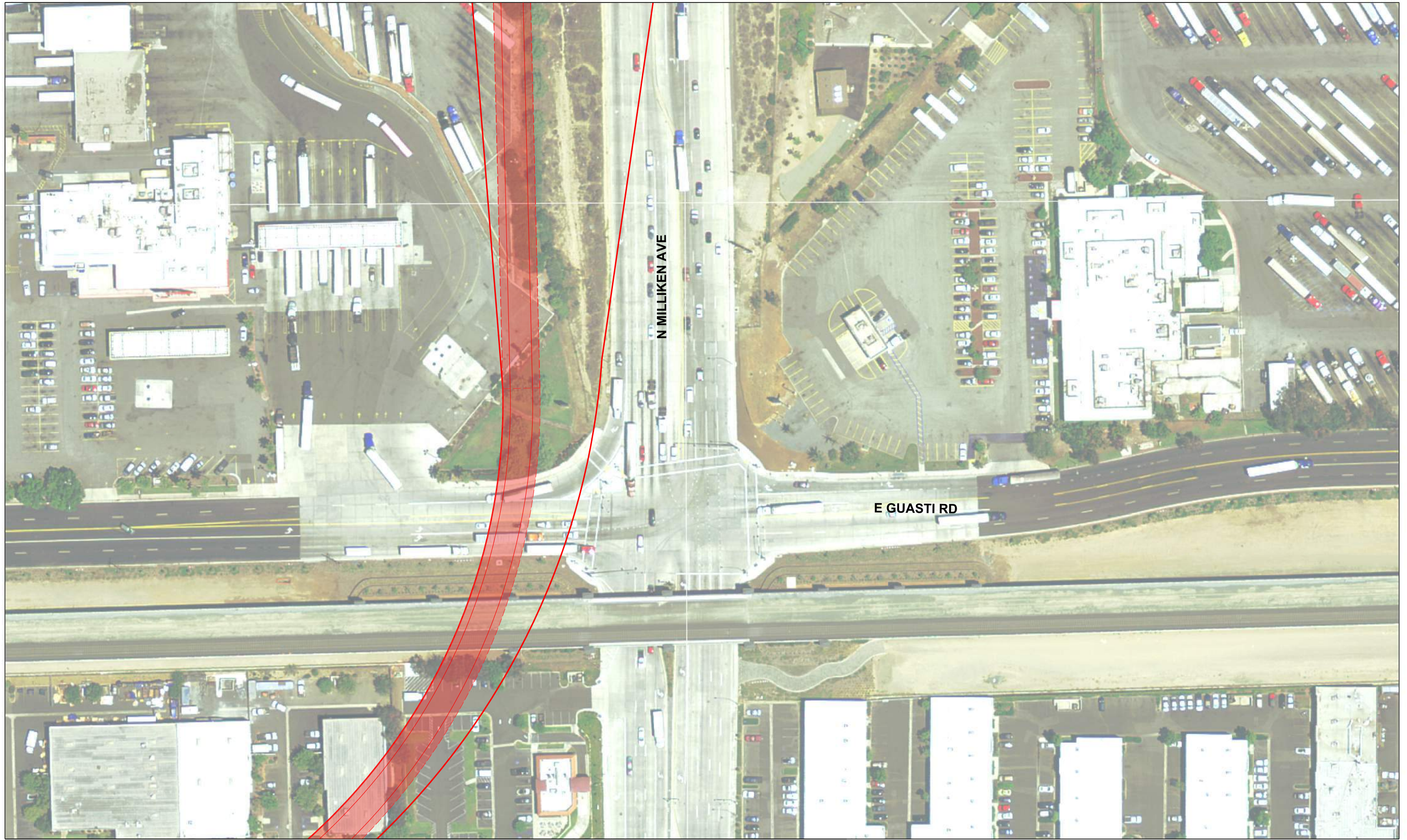




- PROJECT FOOTPRINT
- PERMANENT IMPACTS
- TUNNEL BASE (UNDERGROUND)

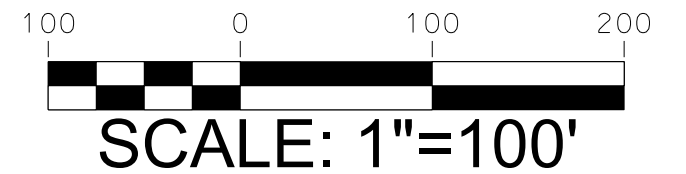
PROJECT MAP FEATURES  
 MAP 8 OF 21  
 ONTARIO AIRPORT LOOP  
 CITIES OF RANCHO  
 CUCAMONGA AND ONTARIO

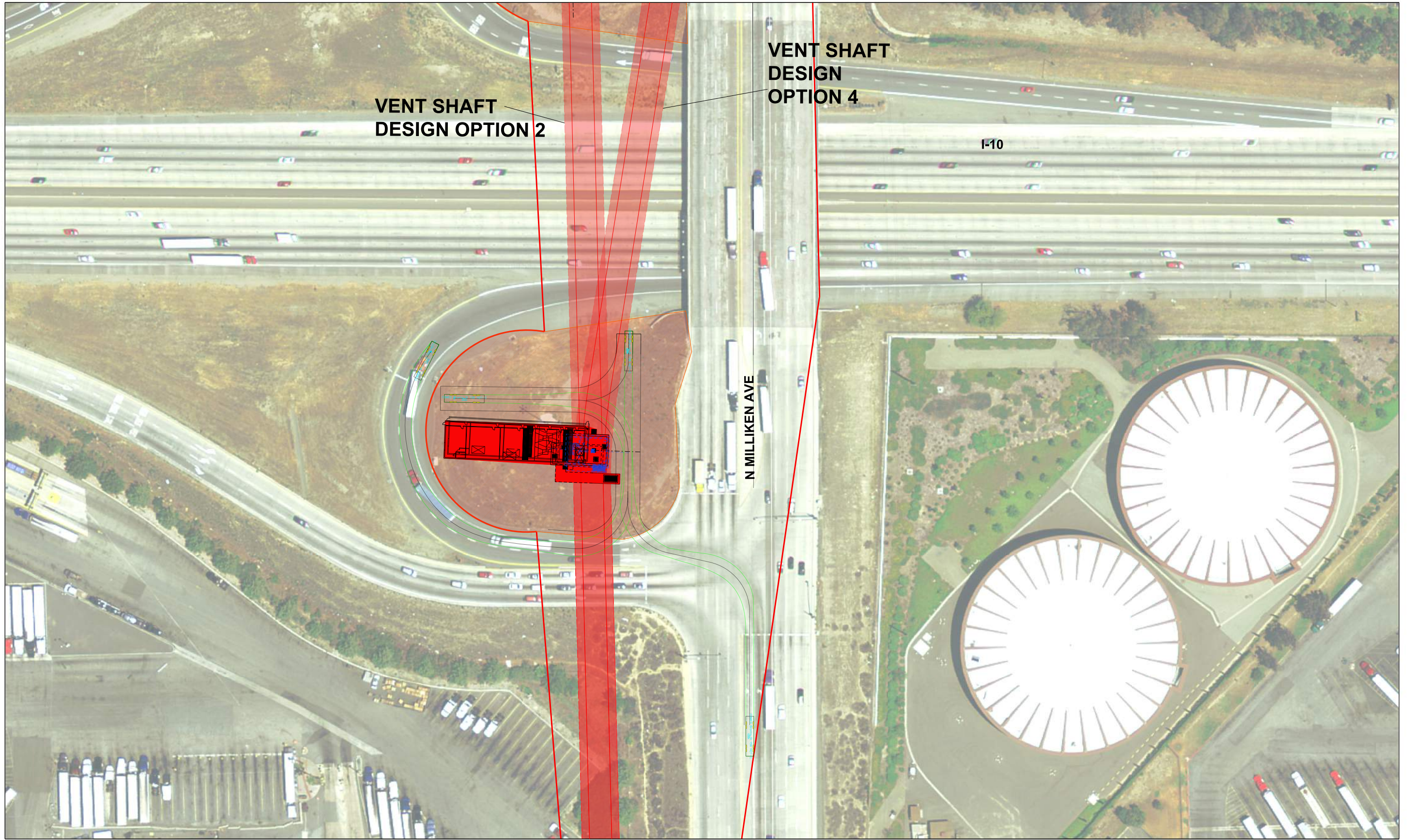




- PROJECT FOOTPRINT
- PERMANENT IMPACTS
- TUNNEL BASE (UNDERGROUND)

PROJECT MAP FEATURES  
 MAP 9 OF 21  
 ONTARIO AIRPORT LOOP  
 CITIES OF RANCHO  
 CUCAMONGA AND ONTARIO










VENT SHAFT  
DESIGN OPTION 2

VENT SHAFT  
DESIGN  
OPTION 4

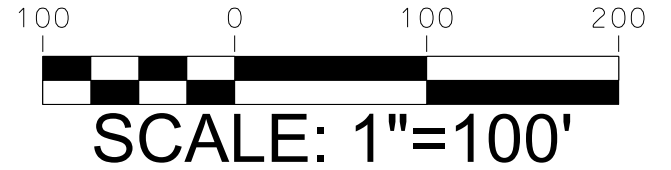
I-10

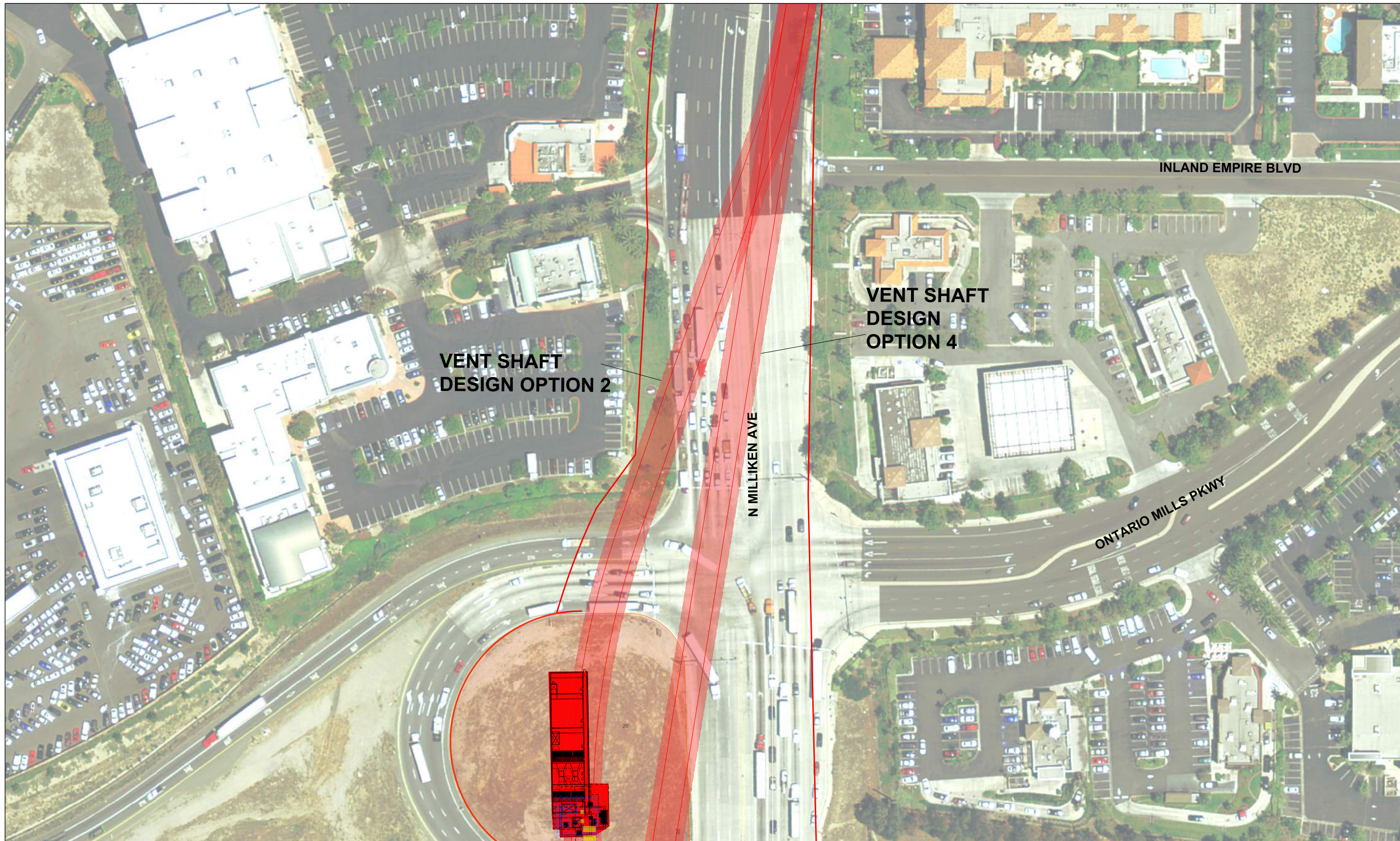
N MILLIKEN AVE







- |   |  |   |
|---|--|---|
|  | PROJECT FOOTPRINT  | <b>PERMANENT IMPACTS</b>  |
|  | TEMPORARY IMPACTS<br>TEMPORARY EASEMENT/<br>CONSTRUCTION STAGING<br>AREA |  |
|   |  |  |
|   |  |  |

- |                                   |
|-----------------------------------|
| TUNNEL BASE (UNDERGROUND)         |
| ACCESS ROAD (ABOVEGROUND)         |
| TUNNEL EGRESS SHAFT (ABOVEGROUND) |

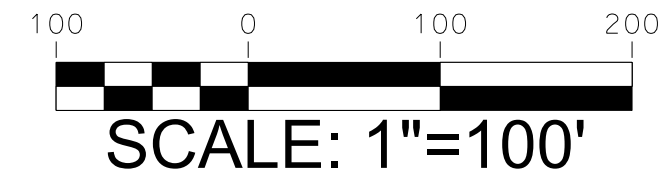
PROJECT MAP FEATURES  
MAP 10 OF 21  
ONTARIO AIRPORT LOOP  
CITIES OF RANCHO  
CUCAMONGA AND ONTARIO





- |   |   |   |
|---|---|---|
|  | PROJECT FOOTPRINT                                   | <b>PERMANENT IMPACTS</b>  |
|  | TEMPORARY IMPACTS                                   |  TUNNEL BASE (UNDERGROUND)         |
|  | TEMPORARY EASEMENT/<br>CONSTRUCTION STAGING<br>AREA |  ACCESS ROAD (ABOVEGROUND)         |
|   |   |  TUNNEL EGRESS SHAFT (ABOVEGROUND) |

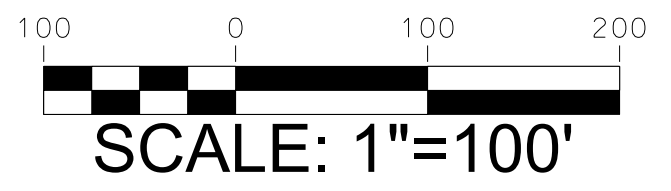
PROJECT MAP FEATURES  
 MAP 11 OF 21  
 ONTARIO AIRPORT LOOP  
 CITIES OF RANCHO  
 CUCAMONGA AND ONTARIO

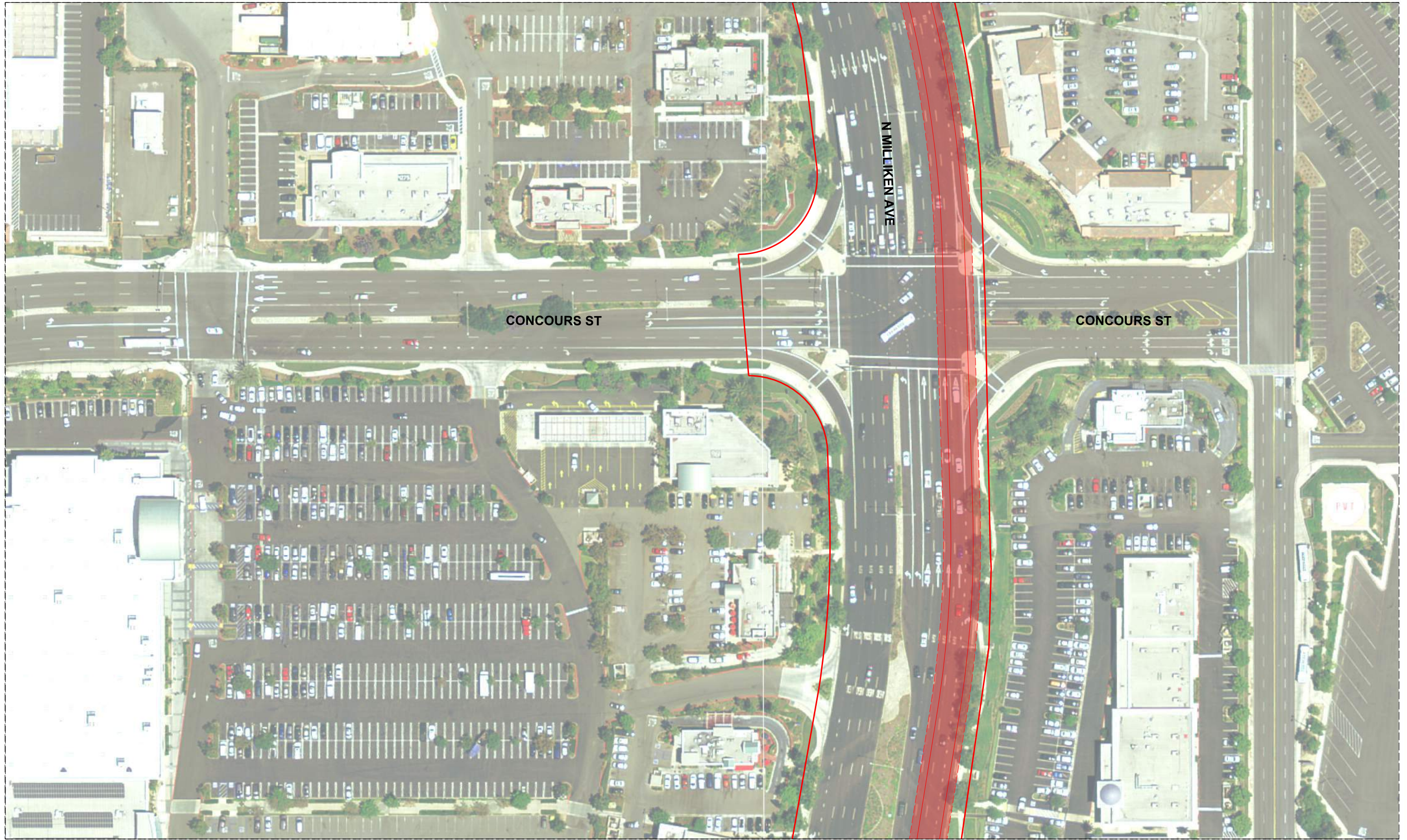




- PROJECT FOOTPRINT
- PERMANENT IMPACTS
- TUNNEL BASE (UNDERGROUND)

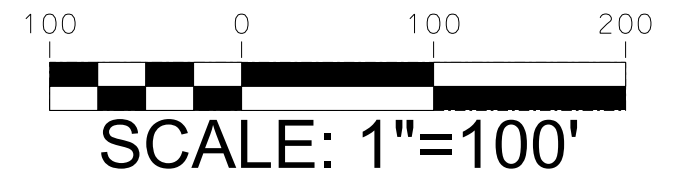
PROJECT MAP FEATURES  
 MAP 12 OF 21  
 ONTARIO AIRPORT LOOP  
 CITIES OF RANCHO  
 CUCAMONGA AND ONTARIO





- PROJECT FOOTPRINT
- PERMANENT IMPACTS
- TUNNEL BASE (UNDERGROUND)

PROJECT MAP FEATURES  
 MAP 13 OF 21  
 ONTARIO AIRPORT LOOP  
 CITIES OF RANCHO  
 CUCAMONGA AND ONTARIO

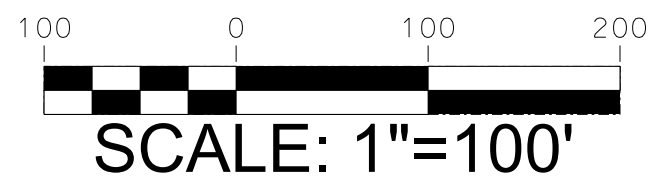


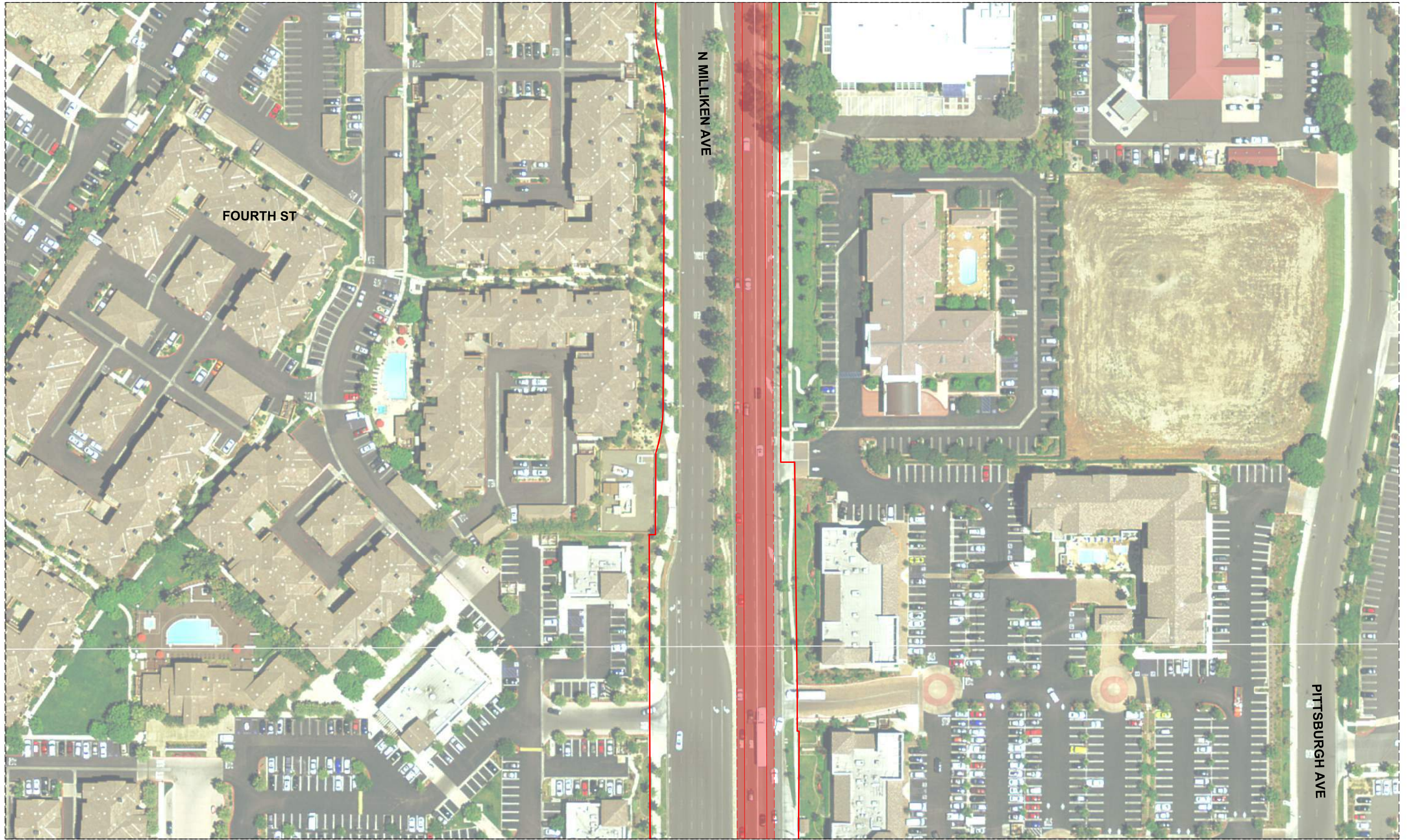




- PROJECT FOOTPRINT
- PERMANENT IMPACTS
- TUNNEL BASE (UNDERGROUND)

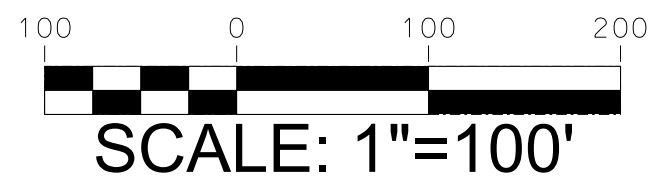
PROJECT MAP FEATURES  
 MAP 14 OF 21  
 ONTARIO AIRPORT LOOP  
 CITIES OF RANCHO  
 CUCAMONGA AND ONTARIO

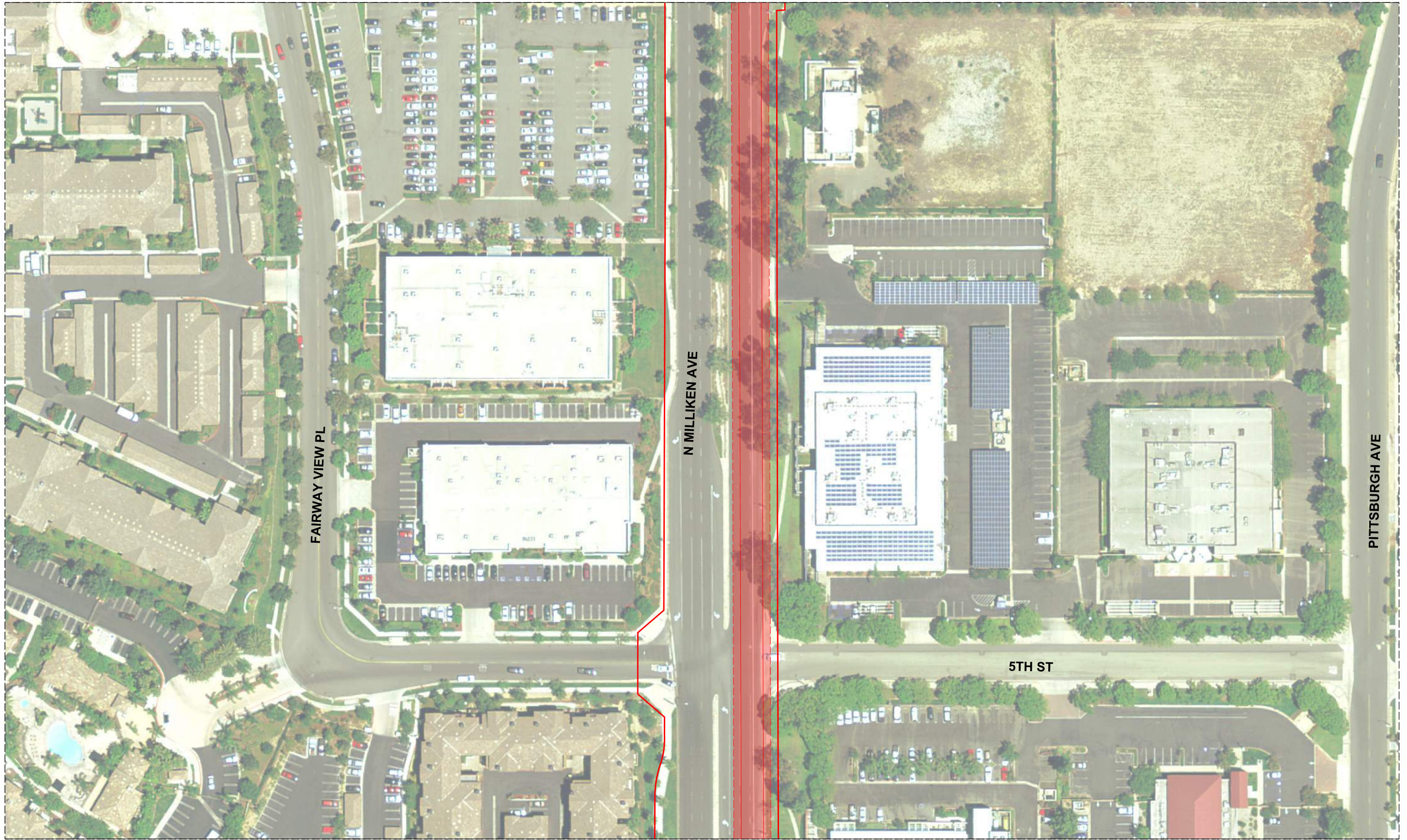




- PROJECT FOOTPRINT
- PERMANENT IMPACTS
- TUNNEL BASE (UNDERGROUND)

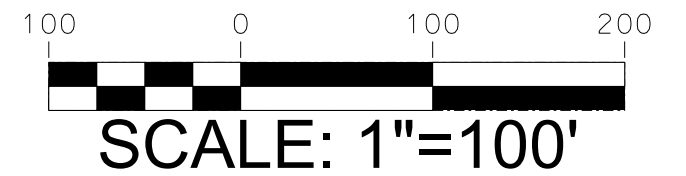
PROJECT MAP FEATURES  
 MAP 15 OF 21  
 ONTARIO AIRPORT LOOP  
 CITIES OF RANCHO  
 CUCAMONGA AND ONTARIO

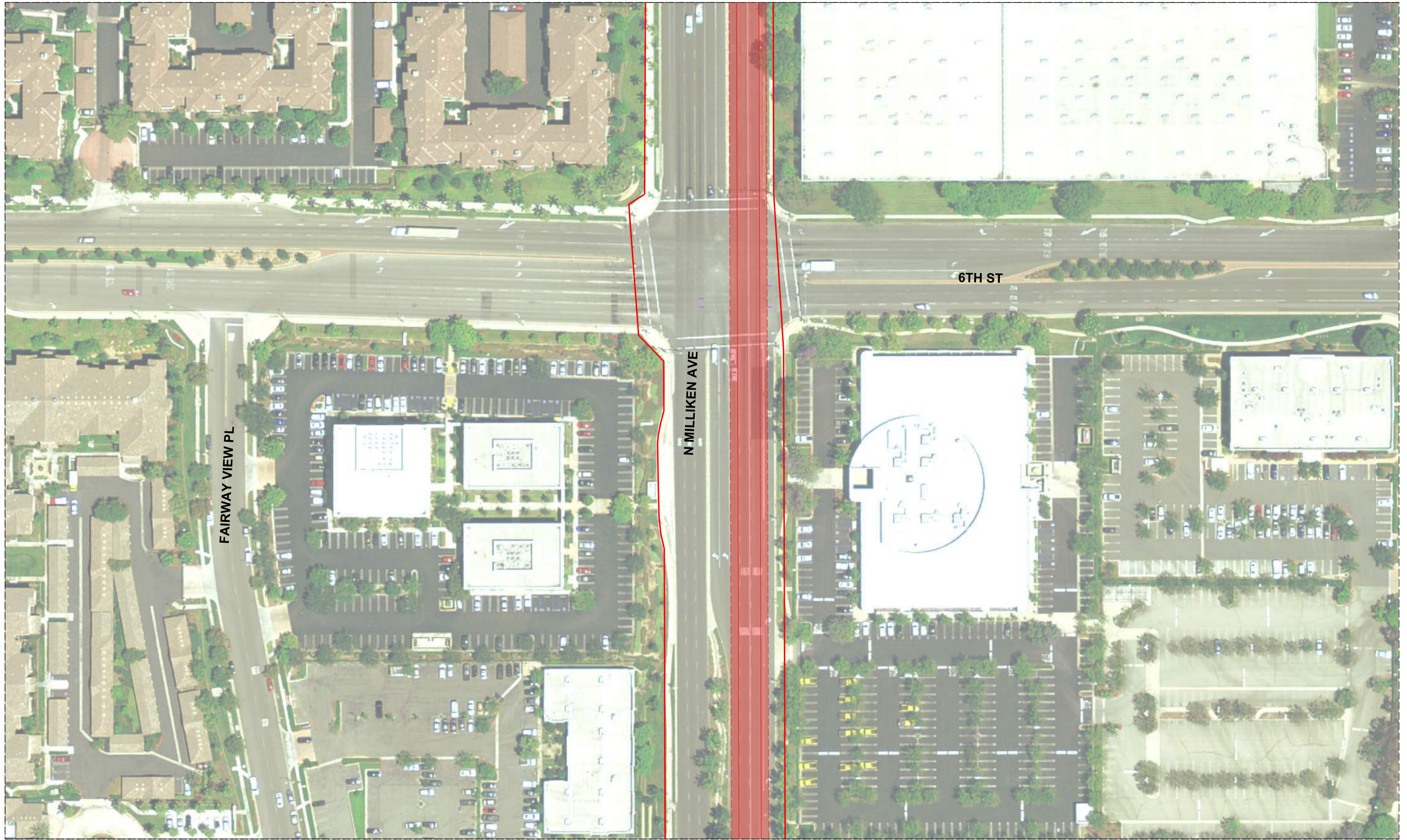




- PROJECT FOOTPRINT
- PERMANENT IMPACTS
- TUNNEL BASE (UNDERGROUND)

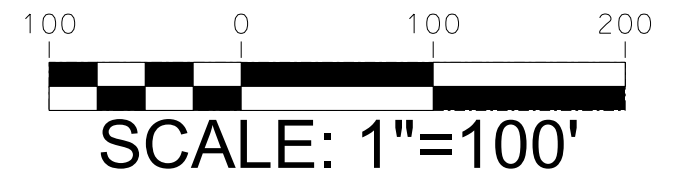
PROJECT MAP FEATURES  
 MAP 16 OF 21  
 ONTARIO AIRPORT LOOP  
 CITIES OF RANCHO  
 CUCAMONGA AND ONTARIO





- PROJECT FOOTPRINT
- PERMANENT IMPACTS
- TUNNEL BASE (UNDERGROUND)

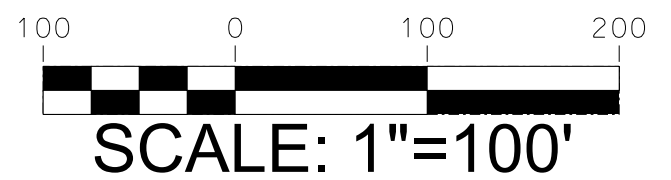
PROJECT MAP FEATURES  
 MAP 17 OF 21  
 ONTARIO AIRPORT LOOP  
 CITIES OF RANCHO  
 CUCAMONGA AND ONTARIO

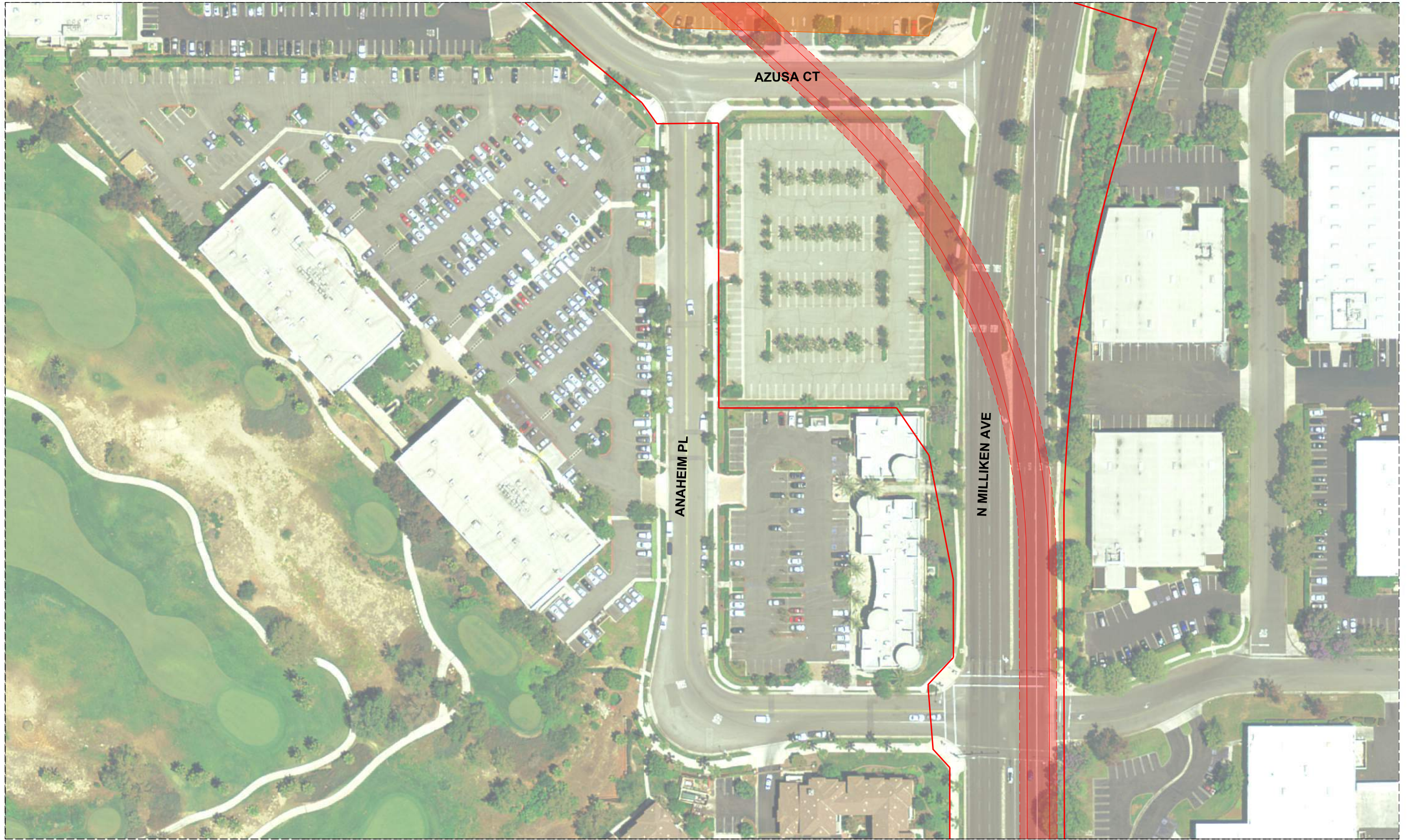




- PROJECT FOOTPRINT
- PERMANENT IMPACTS
- TUNNEL BASE (UNDERGROUND)

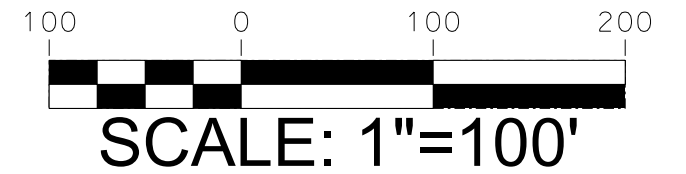
PROJECT MAP FEATURES  
 MAP 18 OF 21  
 ONTARIO AIRPORT LOOP  
 CITIES OF RANCHO  
 CUCAMONGA AND ONTARIO

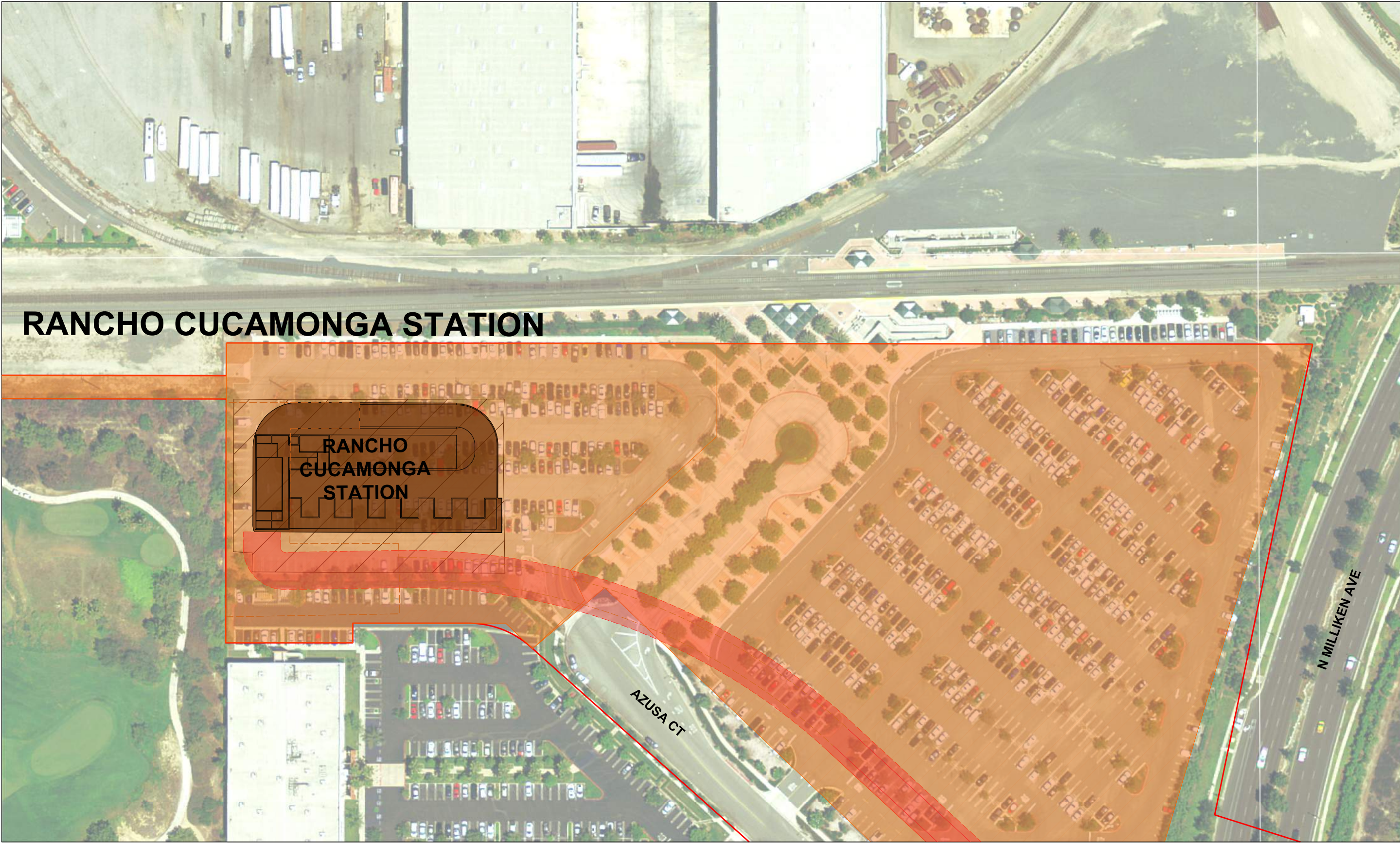




- PROJECT FOOTPRINT
- PERMANENT IMPACTS
- TEMPORARY IMPACTS
- TEMPORARY EASEMENT/  
CONSTRUCTION STAGING  
AREA
- TUNNEL BASE (UNDERGROUND)

PROJECT MAP FEATURES  
 MAP 19 OF 21  
 ONTARIO AIRPORT LOOP  
 CITIES OF RANCHO  
 CUCAMONGA AND ONTARIO













# RANCHO CUCAMONGA STATION

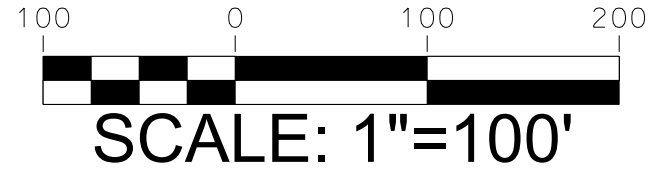
RANCHO CUCAMONGA STATION

AZUSA CT

N MILLIKEN AVE

- |   |   |   |                                 |
|---|---|---|---------------------------------|
|  | PROJECT FOOTPRINT                                   |  | PERMANENT IMPACTS               |
|  | TEMPORARY IMPACTS                                   |  | TUNNEL BASE (UNDERGROUND)       |
|  | TEMPORARY EASEMENT/<br>CONSTRUCTION STAGING<br>AREA |  | CUT AND COVER (ABOVEGROUND)     |
|   |   |  | STATION FOOTPRINT (ABOVEGROUND) |
|   |   |  | PARKING IMPACT (ABOVEGROUND)    |

PROJECT MAP FEATURES  
 MAP 20 OF 21  
 ONTARIO AIRPORT LOOP  
 CITIES OF RANCHO  
 CUCAMONGA AND ONTARIO





- PROJECT FOOTPRINT
- TEMPORARY IMPACTS
- TEMPORARY EASEMENT/  
CONSTRUCTION STAGING  
AREA

PROJECT MAP FEATURES  
 MAP 21 OF 21  
 ONTARIO AIRPORT LOOP  
 CITIES OF RANCHO  
 CUCAMONGA AND ONTARIO

